



# EDGE SURGICAL TIP™

## #2

### Technical specifications

Intended use	Endodontics				
Indications for use	Endodontic apical surgery				
Description	Universal diamond-coated apical surgery tip for the retro-preparation of canals of anterior teeth				
Tip type	Diamond-coated				
Allergenic factor	Tip made of surgical stainless steel as per ASTM F899 - 12b  Surgical stainless steel contains: <ul style="list-style-type: none"> <li>• nickel</li> <li>• chromium</li> </ul> Diamond polishing crimping binder alloy contains: <ul style="list-style-type: none"> <li>• nickel</li> </ul>				
Commercial reference	AS3D : F00065				
Medical class	Class of medical device: IIa according to 93/42/EEC directive				
Adjustments	Newtron range	P5 Range	Suprasson P5 Booster	Prophy Max - P-Max - Implant Center 2 - Piezotome 2	
	7	7	5	3	

### Service life

As it is not possible to establish a maximum number of uses (that may be determined by many parameters such as duration of use, hardness of enamel, the force applied, wear), we recommend that medical devices being routinely used are replaced at least once a year. Replace the medical device if the tip does not vibrate at the expected frequency, the treatment is not progressing as normal and is taking longer or is at a standstill.

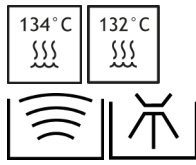
### Associated documentation

Document title	References
Consulting electronic user instructions	J00007
Cleaning, disinfection and sterilization instructions for tips	J02001
Endosuccess Apical Surgery Kit clinical tips	J08161
Ultrasonic generator power settings table	J58000
General instructions relating to the complete range of standard ultrasonic dental tips	J02101

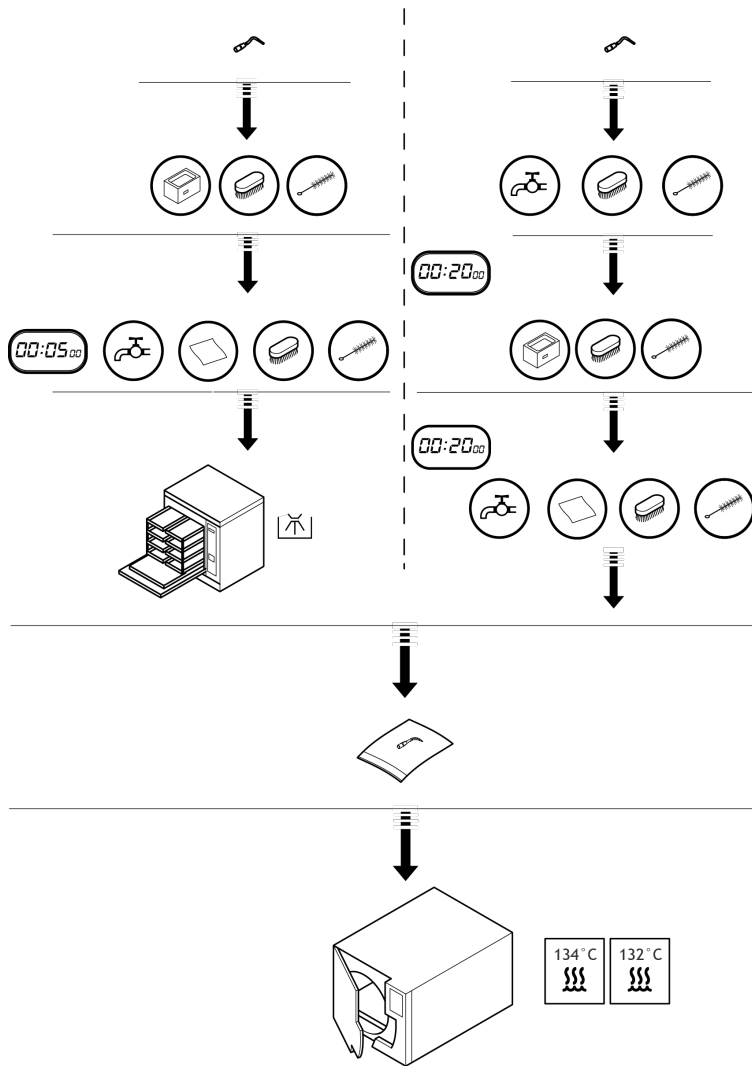
## Sterilization



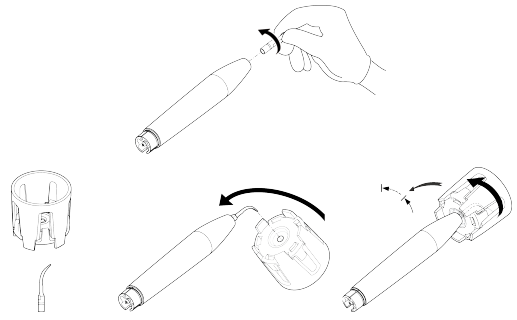
Sterilize prior to each use



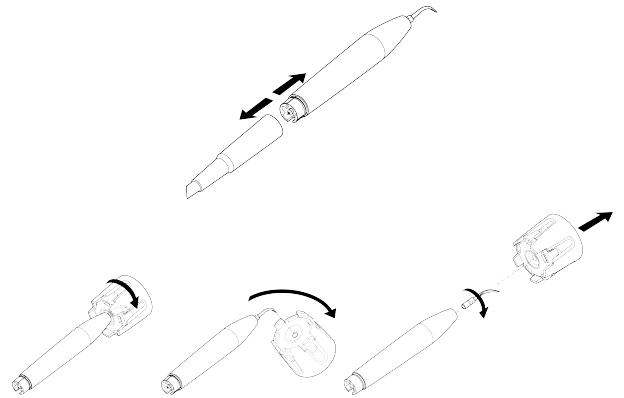
The tips must be cleaned, disinfected and sterilized prior to each use. Prior to each use, please refer to the cleaning, disinfection and sterilization instructions for tips J02001.



## Installation



## Disassembly



## Manufactured For:



EdgeEndo  
5600 Wyoming Blvd NE  
Suite 100  
Albuquerque, NM 87109

[www.edgeendo.com](http://www.edgeendo.com)



## Date of first CE marking

2009

Tip | AS3D | J00441 | (09) | V1 | 03/2017 | NB15EN020A

SATELEC S.A.S. | A Company of ACTEON Group  
17 av. Gustave Eiffel | BP 30216 | 33708 MERIGNAC cedex | FRANCE  
Tel. +33 (0) 556 34 06 07 | Fax. +33 (0) 556 34 92 92  
E-mail: [satelec@acteongroup.com](mailto:satelec@acteongroup.com) | [www.acteongroup.com](http://www.acteongroup.com)